

# 300 Ozark Trail

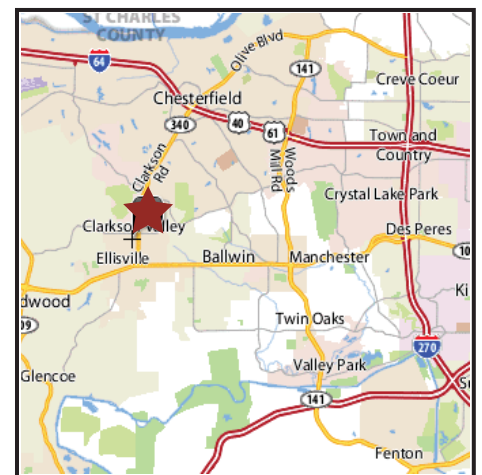
300 Ozark Trail Ellisville (Saint Louis), Missouri 63011



## OFFICE SPACE AVAILABLE

### PROPERTY HIGHLIGHTS

- Office Building located in Dierberg's anchored, mixed-use shopping center close to residential areas of W. St. Louis County
- Landscaped Interior Atrium
- Full Service Leases
- Build to Suit
- 3 access points (Clayton Rd., Clarkson Rd., Ozark Trail)



For information contact Jim J. Otis: ☎ 314-434-4004 ✉ [jjotis@otisandclark.com](mailto:jjotis@otisandclark.com)

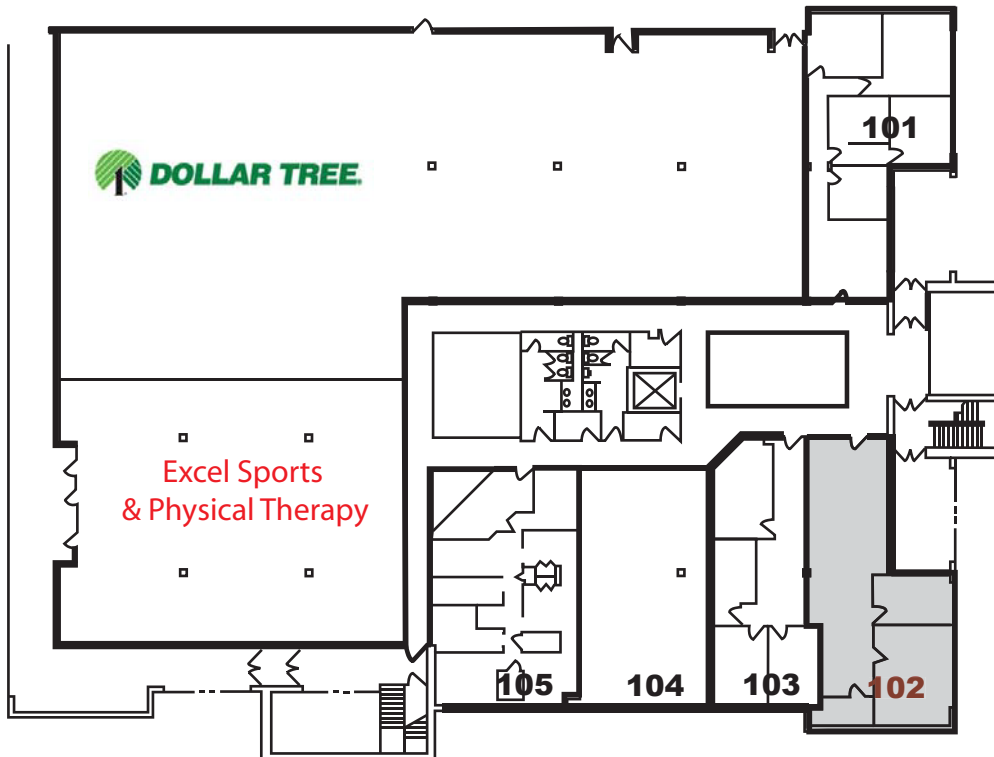
1850 Craigshire Road, Suite 103, Saint Louis, MO 63146  
P: 314.434.4004 F: 314.434.4113 [www.otisandclark.com](http://www.otisandclark.com)



Otis & Clark Properties

# 300 Ozark Trail

300 Ozark Trail Ellisville (Saint Louis), Missouri 63011



## FIRST FLOOR

■ Available for Lease

Suite 102 - 1,250 sq. ft.

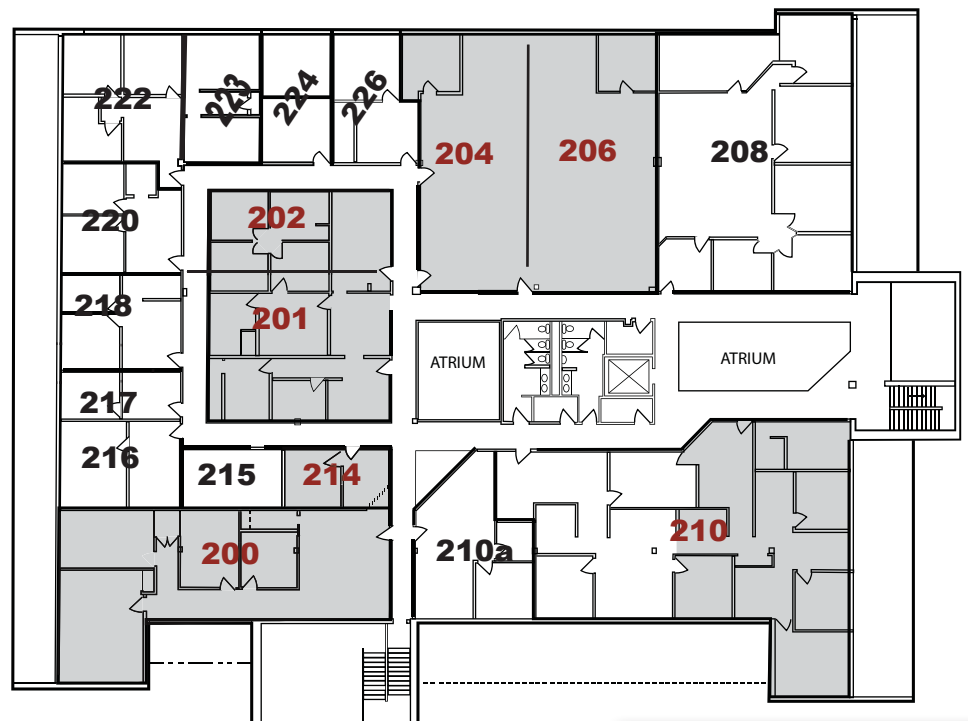
## SECOND FLOOR

■ Available for Lease

Suite 200 - 1,752 sq. ft.

Suite 202 - 744 sq. ft.

Suite 214 - 254 sq. ft.



For information contact Jim J. Otis: ☎ 314-434-4004 ✉ [jjotis@otisandclark.com](mailto:jjotis@otisandclark.com)

1850 Craigshire Road, Suite 103, Saint Louis, MO 63146

P: 314.434.4004 F: 314.434.4113 [www.otisandclark.com](http://www.otisandclark.com)



Otis & Clark Properties