

# 300 OZARK TRAIL

300 Ozark Trail Ellisville (Saint Louis), Missouri 63011

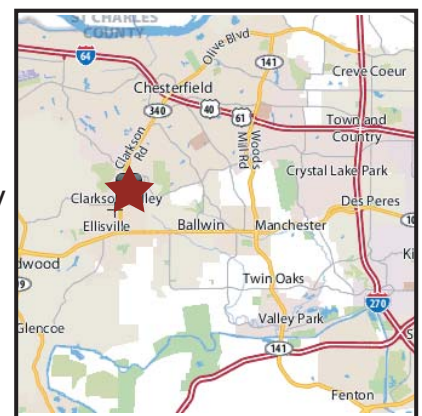
**300**  
**OZARK**  
**TRAIL**



## OFFICE SPACE AVAILABLE

### PROPERTY HIGHLIGHTS

- Office Building located in Dierberg's anchored, mixed-use shopping center close to residential areas of West St. Louis County
- Landscaped Interior Atrium
- Full Service Leases
- Build to Suit
- 3 access points (Clayton Rd., Clarkson Rd., Ozark Trail)

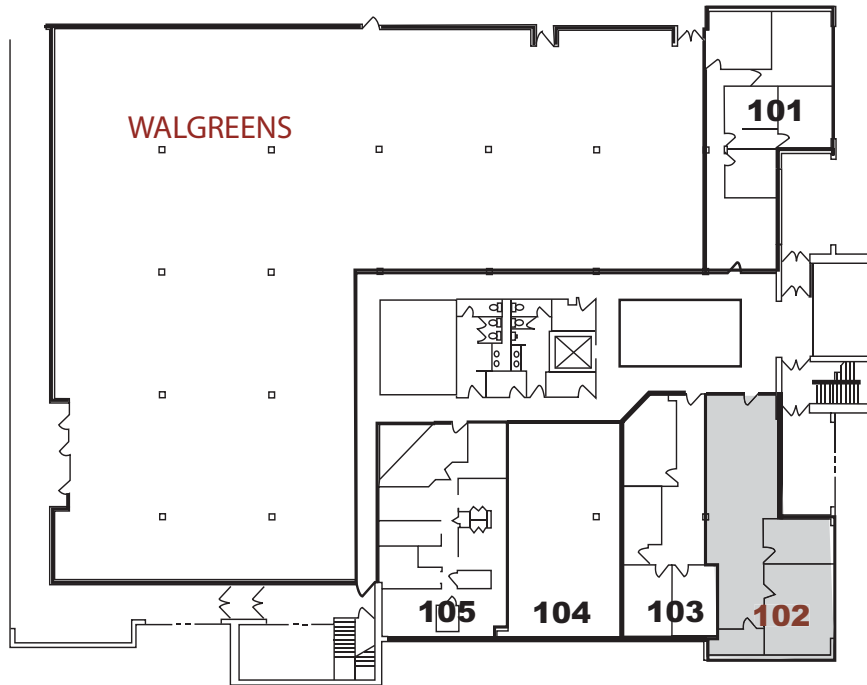


For information contact Jim J. Otis: 314-434-4004 [jjotis@otisandclark.com](mailto:jjotis@otisandclark.com)

1850 Craigshire Road, Suite 103, Saint Louis, MO 63146  
314.434.4004 phone 314.434.4113 fax [www.otisandclark.com](http://www.otisandclark.com)

# 300 OZARK TRAIL

300 Ozark Trail Ellisville (Saint Louis), Missouri 63011



## FIRST FLOOR

■ Available for Lease

Suite 102 - 1,250 sq. ft.

## SECOND FLOOR

■ Available for Lease

Suite 202 - 744 sq.ft.

Suite 204 - 1,299 sq.ft.

Suite 206 - 1,303 sq. ft.

Suite 208 - 2,117 sq.ft.



For information contact Jim J. Otis: 314-434-4004 [jjotis@otisandclark.com](mailto:jjotis@otisandclark.com)

1850 Craigshire Road, Suite 103, Saint Louis, MO 63146  
314.434.4004 phone 314.434.4113 fax [www.otisandclark.com](http://www.otisandclark.com)



Otis & Clark Properties