

LAKEVIEW OFFICE CENTER

14500 South Outer Forty Saint Louis, Missouri 63017

FOR LEASE



TOTAL BUILDING SIZE: 85,509 Square Foot Office Building

AVAILABILITY: Immediate

AVAILABLE SPACE:

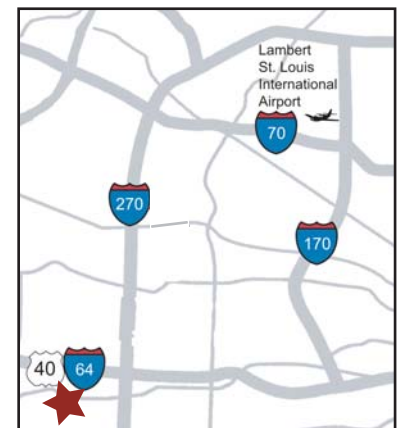
1,660	rsf Suite 108
843	rsf Suite 207
7,392	rsf Suite 405
1,732	rsf Suite 410
3,045	rsf Suite 505

Located in Central St. Louis County with Easy Access to Hwy 40, I-270, and Hwy 141

PARKING: Parking Ratio 4.0 per 1,000 square feet

ADDITIONAL INFO:

- Great Hwy 40 visibility
- Recently Renovated Lobby
- Newly renovated bathrooms
- Building Break Room
- Building Conference Room
- High Speed Communication
- Outstanding Shopping, Restaurants, and Hotels minutes away
- Five Story Vaulted Atrium



For information contact Jim J. Otis: 314-434-4004 jjotis@otisandclark.com

1850 Craigshire Road, Suite 103, Saint Louis, MO 63146
314.434.4004 phone 314.434.4113 fax www.otisandclark.com

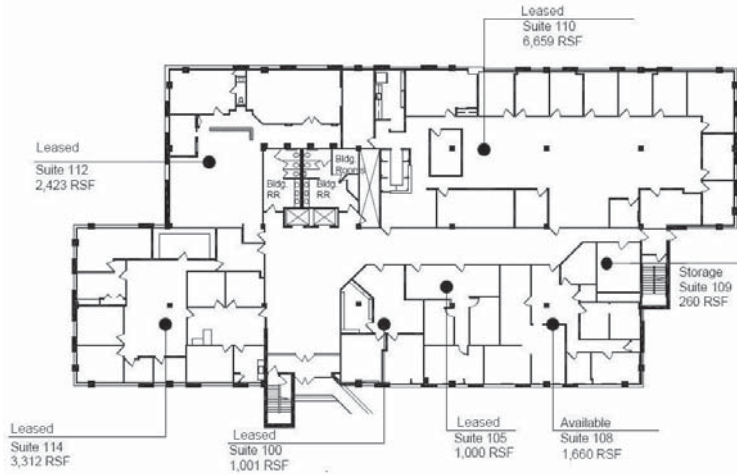


LAKEVIEW OFFICE CENTER

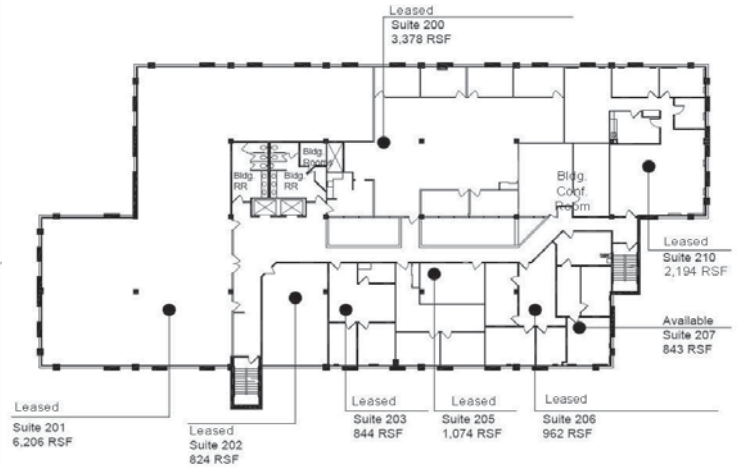
14500 South Outer Forty Saint Louis, Missouri 63017

FOR LEASE

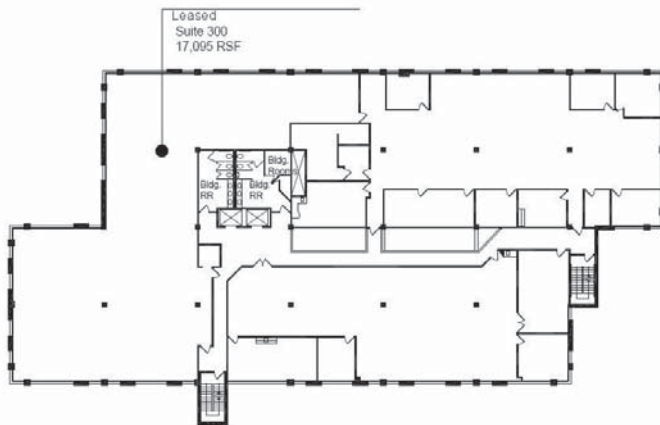
1st Floor



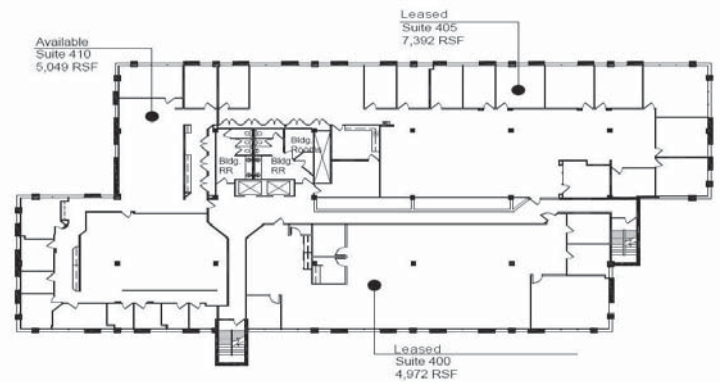
2nd Floor



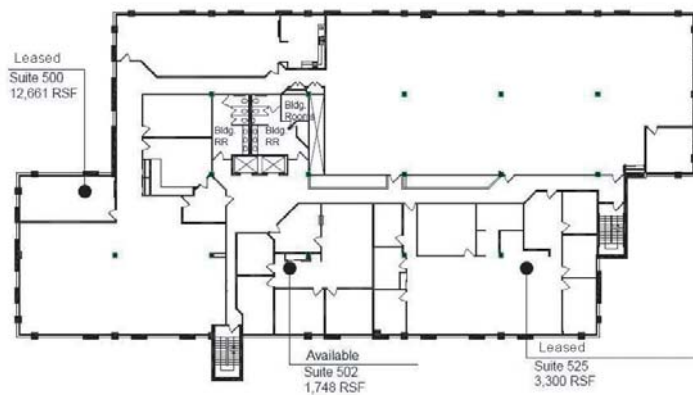
3rd Floor



4th Floor



5th Floor



For information contact Jim J. Otis: 314-434-4004 jjotis@otisandclark.com

1850 Craigshire Road, Suite 103, Saint Louis, MO 63146
314.434.4004 phone 314.434.4113 fax www.otisandclark.com



Otis & Clark Properties