

17738 Edison Ave.

Chesterfield, MO



FOR LEASE



1,958 Sq. Ft. Office Available Immediately

PROPERTY HIGHLIGHTS

- 1,958 Sq. Ft. office
- Located in Chesterfield Valley
- Office already built out
 - 3 Offices
 - Conference Room
 - Kitchen
 - Bathroom
 - Existing furniture available for tenant use
- Easy access to Hwy 40/64
- Close proximity to the Chesterfield valley shopping area
- Landlord on site



Asking Rate: Negotiable

For information contact Jim J. Otis: 314-434-4004 jjotis@otisandclark.com

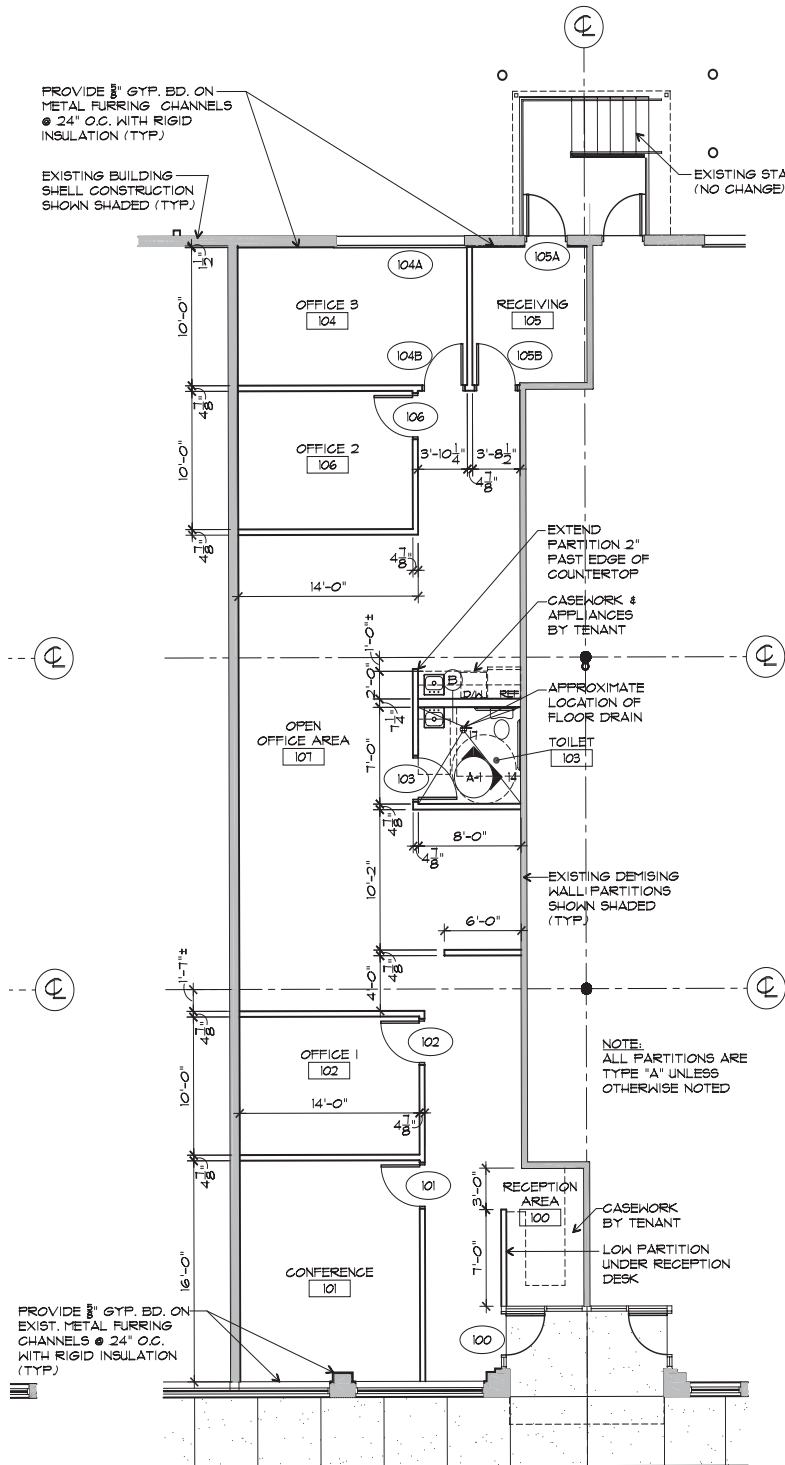
1850 Craigshire Road, Suite 103, Saint Louis, MO 63146
314.434.4004 phone 314.434.4113 fax www.otisandclark.com



Otis & Clark Properties

17738 Edison Ave.

Chesterfield, MO



3 FLOOR PLAN
1/8" = 1'-0"



For information contact Jim J. Otis: 314-434-4004 jjotis@otisandclark.com

1850 Craigshire Road, Suite 103, Saint Louis, MO 63146
314.434.4004 phone 314.434.4113 fax www.otisandclark.com



Otis & Clark Properties